

SCRIPTANIA GODOYI SP. N.: A NEW SPECIES OF
HADENINAE FROM CHILE
(LEPIDOPTERA, NOCTUIDAE, HADENINAE)

Scriptania godoyi n.sp.: Nueva especie de Hadeninae de Chile
(Lepidoptera, Noctuidae, Hadeninae)

TANIA S. OLIVARES*

ABSTRACT

A new species of hadeninae-moth *Scriptania godoyi* sp.n. from Chile is described. This species is akin to *S. lithophilus*.

KEYWORD. Lepidoptera. Hadeninae. *Scriptania godoyi* sp.n. Taxonomy. Chile.

The genus *Scriptania* was described by Hampson in 1905, being the type-species *Agrotis michaelseni* Staudinger. At the present time eight species belong to this genus and four of these are present in Chile: *S. lithophilus* Butler, *S. michaelseni* (Staudinger), *S. nordenskjoldi* (Staudinger) and *S. syzyga* Hampson. (Jana-Sáenz, 1983).

MATERIAL AND METHODS

A total of 34 specimens collected from Puerto Montt and Aysen, Chile, by Luis E. Peña and Eduardo Godoy were analyzed. The type specimens are

RESUMEN

Se describe una nueva especie de náctuido hadenino, *Scriptania godoyi* n.sp. para Chile. Esta especie es afín a *S. lithophilus*.

deposited in the Museo de Zoología of the Universidad de Concepcion and E. Godoy private collection.

Systematics features based on wing maculation, male genitalia using conventional methods of genitalia extraction (Angulo y Weigert, 1977) were studied.

RESULTS

SCRIPTANIA GODOYI SP. N.
(Figs. 1-5)

FEMALE (Fig. 1): Fore wing, tegulae and patagia dark brown and reddish; short antennal ciliae; reniforme spot defined with whitish scales contrasting with the background of the wing, a dark brown cross middle line, orbicular spot with white scales less

*Depto. de Zoología, Universidad de Concepción,
Casilla 2407-10, Concepción.
MZUC: Museum Zoology University of Concepcion

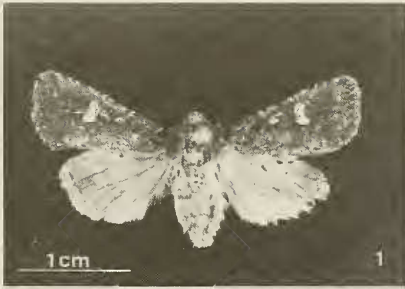


Fig.1 Holotype *Scriptania godoyi* sp.n. Female

marked; abdomen greyish with some brownish scales.

Fore and hind wings fringed, the costal border with a serie of white points which represents bands; palpi and legs with dark brown and white scales mixed.

Hing wings with light brown scales.

FEMALE GENITALIA (Figs. 2 and 3): sterigma and ostium bursae ventrally slightly sclerotized less than corpus bursae; bursa copulatrix bisacular, cervix bursae thin, corpus bursae rolled over itself, strongly sclerotized; signum absent; anterior apophysis half the length of the posterior apophysis.

Wing expansion: 27 mm.

MALE: similar to the female. Antennal ciliae subequal in length to the wide of segment.

MALE GENITALIA (Figs. 4 and 5): spatulate uncus, with central tip, valve elonged with a pronounced low cut, strong corona, clasper flat and inward; double digitus; saccus pointed. Distal part

of the aedeagus with one spine on a bulky base, half length of the medial part a large tuft spines, proximal part with three microspines.

Wing expansion: 29 mm.

Etymology: This species is dedicated to Mr. Eduardo Godoy, Agr. Ing. Servicio Agrícola y Ganadero, Puerto Montt, Chile.

Material examined: 25 Males and 9 females
 1 Female (Holotype) Lago Esmeralda. Cochrane-Aysen. 3-4-II-1990. Trampas Coll; 1 Male (Allotype) Rio Bandurrias. Coyhaique. Aysen. 8-9-II-1990. Trampas Coll. Deposited MZUC.

Paratypi: 3 Males 25 km. South Cochrane. Aysen. 1-3-II-1990. Trampas Coll; 3 Males Rio Baker. 150 m. Aysen. N. Cochrane. 30-31-I-1990. Trampas Coll; 1 Male 60 km .N. Cochrane. Aysen. 5-6-II-90. Trampas Coll Deposited in particular collection Mr. Eduardo Godoy; 2 Females 60 km. N. Cochrane. Aysen. 5-6-II-90. Trampas Coll; 4 Males Lago Esmeralda. Cochrane-Aysen. 3-4-II-1990. Trampas Coll Deposited MZUC, 2 Females Lago Esmeralda. Cochrane-Aysen. 3-4-II-1990. Trampas Coll.; 1 Male Tranquilo (South Murta). Aysen. 6-7-II-1990. Trampas Coll.; 3 Males Rio Bandurrias. Coyhaique. Aysen. 8-9-II-1990. Trampas Coll.; 1 Female Rio Bandurrias. Coyhaique. Aysen. 8-9-II-1990. Tampus Coll; 4 Males Rio Murta 300 m. 7-8-II-1990. Aysen. Trampas Coll; 1 Male 60 km. N. Cochrane. Aysen. 5-6-II-1990. Trampas Coll; 3 Males 30 km. S. Cochrane. 1-3-II-1990. Trampas Coll; 3 Females 30 Km. S. Cochrane. 1-3-II-1990. Trampas Coll; 1 Male Pto. Montt. cerca Aeropuerto Tepual. XII-89. Trampas Coll. Deposited MZUC.

The differences between *S. godoyi* sp.n. and its closest species *S. lithophilus* Butler are show on table I.

Table I. Differences between *S. lithophilus* Butler and *S. godoyi* sp.n.

Character	<i>S. lithophilus</i>	<i>S. godoyi</i>
corona	one row in cucullus	two row in cucullus
valve	slight low cut	pronounced low cut
distal part vesica	unarmed	spine bulky base
medial part vesica	tuft spines	large tuft spines
proximal part vesica	unarmed	three microspines
saccus	rounded	pointed

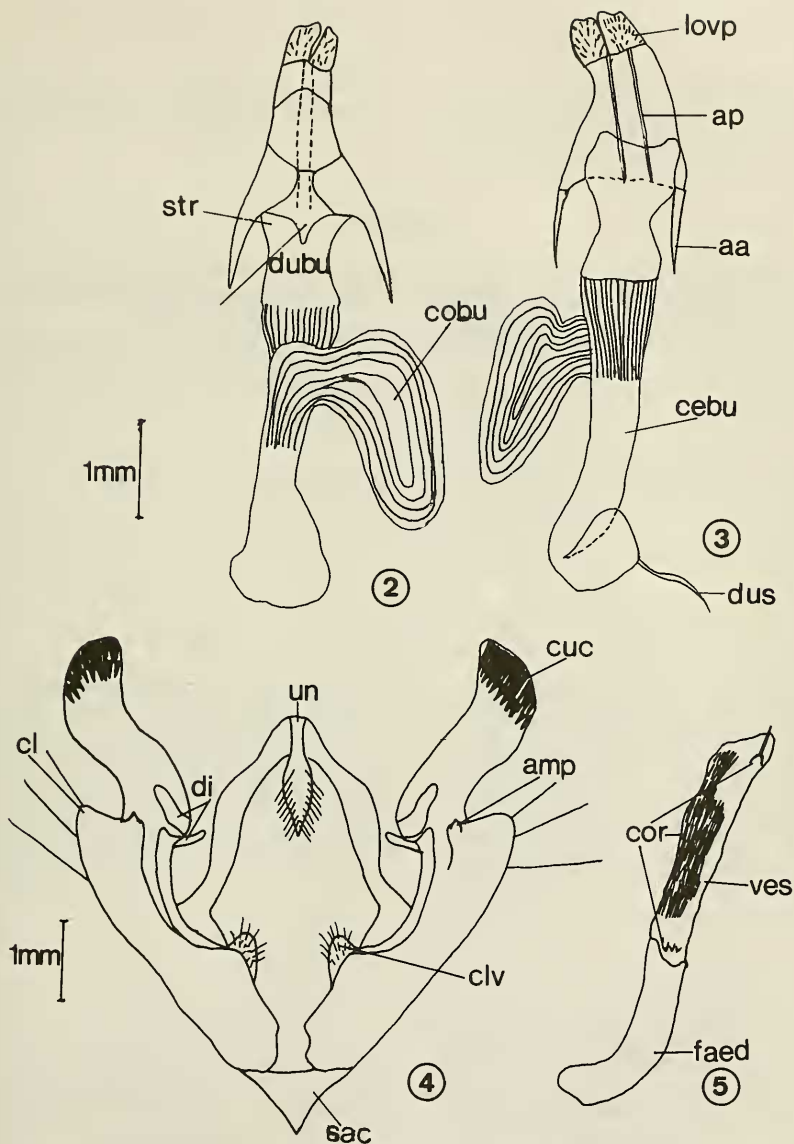


Fig.2-3 Female genitalia *Scriptania godoyi* sp.n. Fig.4-5: Fig.4 valve and Fig. 5 aedeagus *Scriptania godoyi* sp.n.
 aa: anterior apophysis; amp: ampulla; ap: posterior apophysis; cebu: cervix bursae; cl: clasper; clv: clavus; cobu: corpus bursae; cor: cornuti; cuc: cucullus; di: digitus; dubu: ductus bursae; dus: ductus seminalis; faed: aedeagus sheath; lovp: lobe of the ovipositor; osbu: ostium bursae; sac: saccus; str: sterigma; un: uncus; ves: vesica.

ACKNOWLEDGMENTS

I would like to thank, Mr. Luis E. Peña and Eduardo Godoy for providing the studied material, to Dr. Andrés O. Angulo and Dr. María E. Casanueva for their kind suggestions and critical review of the

manuscript.

Thanks are also to the project 91.38.04-6 Universidad de Concepción, for the financial support to develop this research.

BIBLIOGRAPHY

- Angulo, A.O. y G. Th. Weigert. 1977 *Pseudaletia punctulata* (Blanchard) y *Pseudaletia impuncta* (Guenée). Noctuidos hadeninos similares en Chile (Lepidoptera: Noctuidae). Agro Sur 5 (1): 12-17.
- Hampson, G. 1905 Catalogue of the Lepidoptera Phalaenae in the British Museum. 5: 1-634.
- Jana-Sáenz, C. 1983 Catálogo nominal de los lepidópteros noctuidos hadeninae de la región neotropical. Mimeografiado. 31 pp.